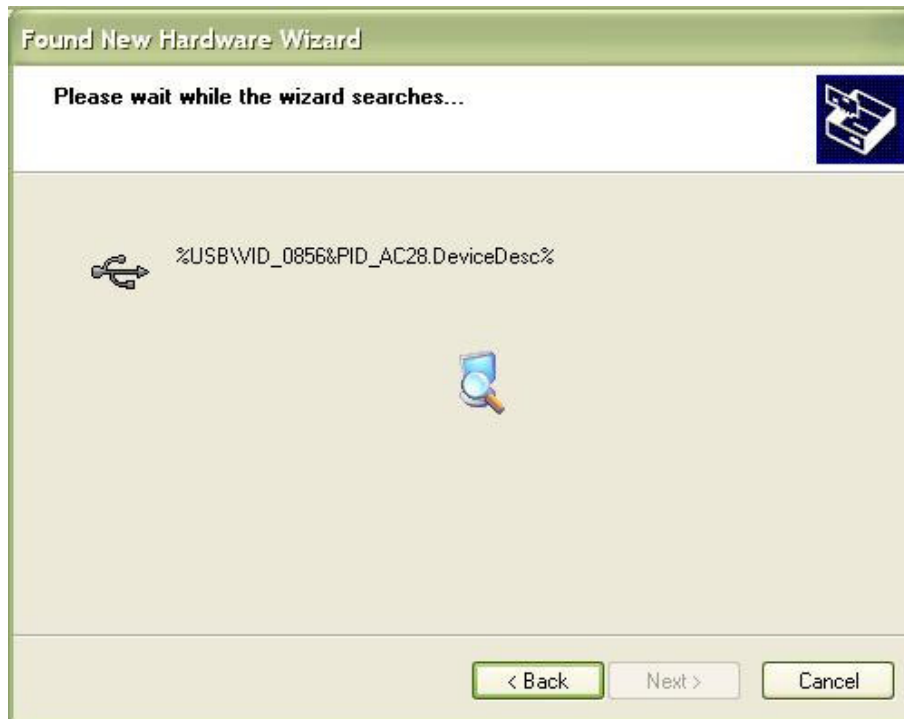


USB Drivers Installation Guide
for Isolated RS-422/485 USB Adapter
(Part #: 501-09-059)

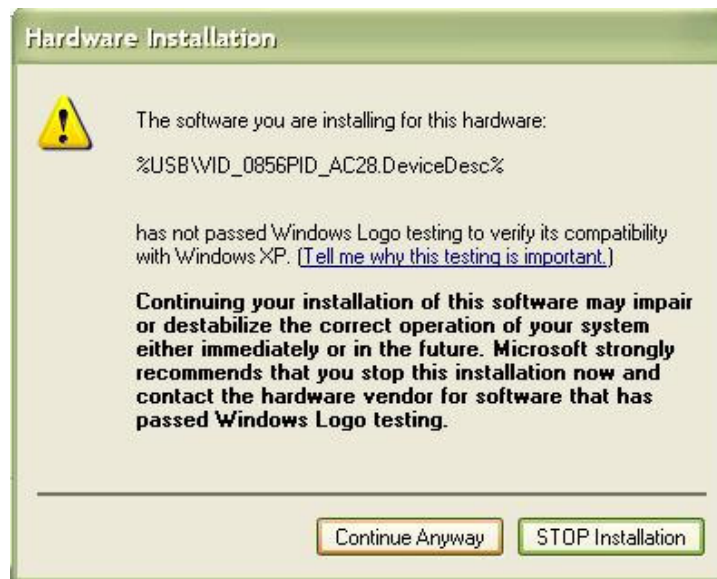
1. Connect USB cable to the PC's USB port.
2. The "Found New Hardware Wizard" will start up automatically.
3. Select "Install the software automatically (Recommended)" option, click "Next" button.



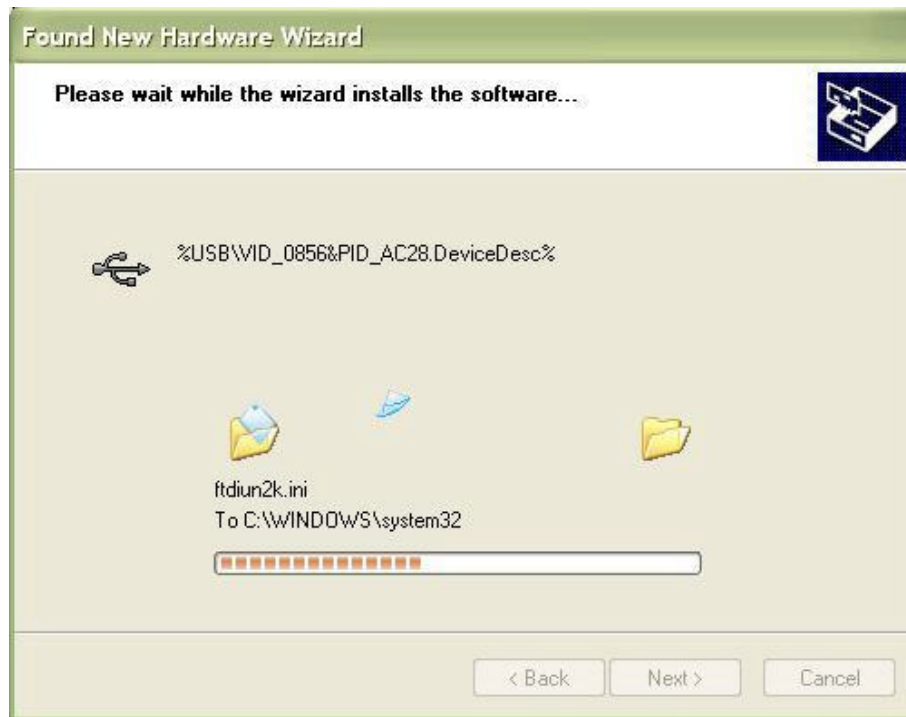
4. Wait while the wizard searches for the drivers.



5. Click “Continue Anyway” button to continue with the installation process.
If Windows operating system is configured to ignore file signature warnings,
no message will appear.



6. The following screen will be displayed as Windows OS copies the required driver files.



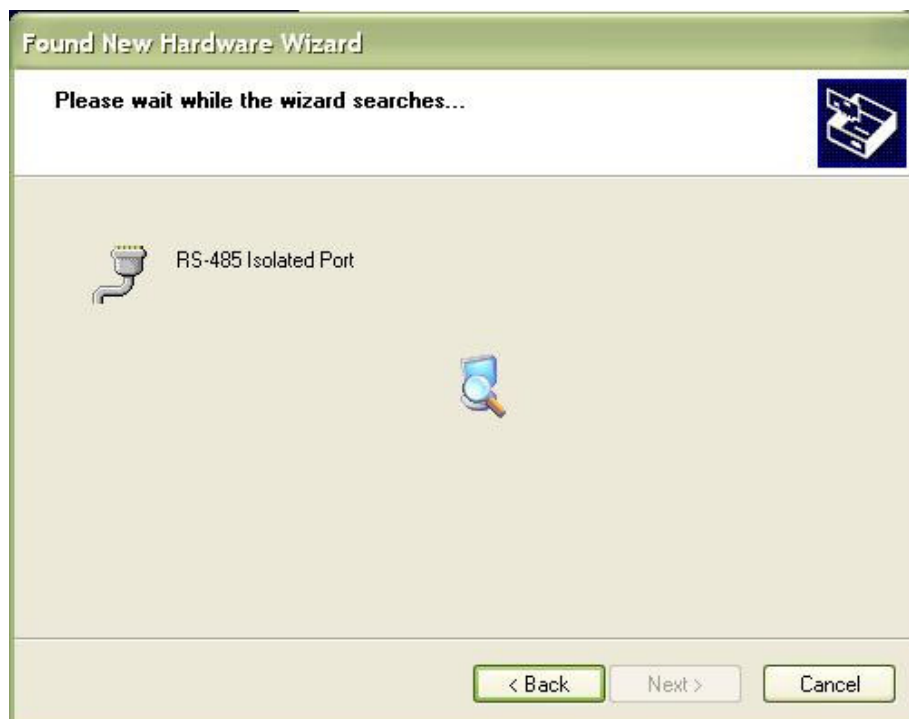
7. Windows should display a message indicating that the installation was successful.
Click "Finish" to complete the 1st part of the USB driver installation process.



8. The “Found New Hardware Wizard” will launch automatically to continue with the installation.
9. Select “Install the software automatically (Recommended)” option, click “Next” button.



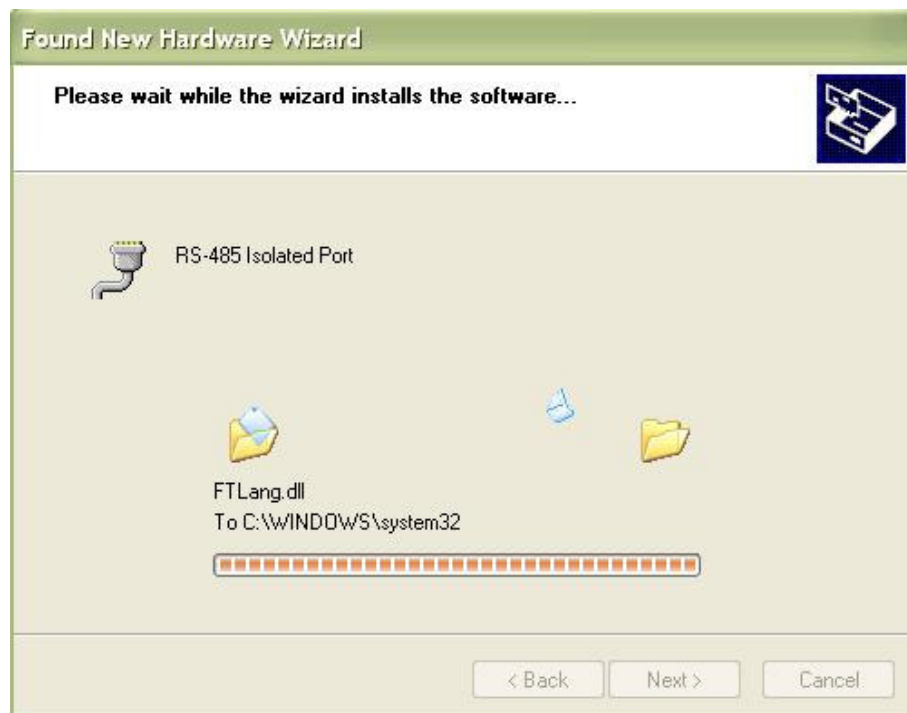
10. Wait for the wizard.



11. Choose “Continue Anyway” button to proceed.



12. The following screen will be displayed as Windows OS installs the required driver files.



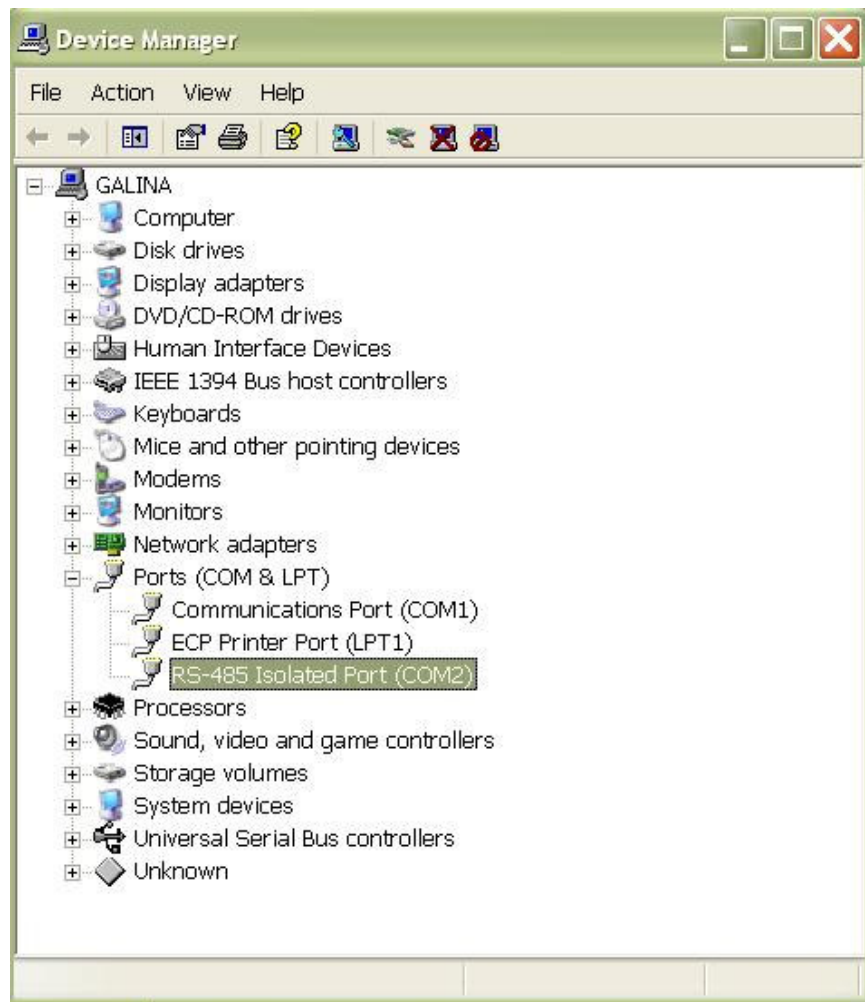
13. Click “Finish” to complete the USB driver installation process.



14. Open the Device Manager:

- Control Panel --> System
- Select “Hardware” Tab
- Click “Device Manager” button

15. New USB Serial Port will be located in Ports (COM & LPT) section.



16. New USB Serial Port Switch Setting.

Isolated RS-422/485 USB Adapter Part # 501-09-059

